



PROCESS SENSORS
MCT460-WP^{WOOD}

NOVA SERIES

MCT460-WP

Wood Products Moisture Transmitter

The First Choice for Near Infrared (NIR) Moisture Measurement
in the Wood Products Industry

PROCESS SENSORS
CORPORATION 



Applied
Instruments



NOVA SERIES MCT460-WP

Near Infrared (NIR) Moisture Transmitter
for the Wood Products Industry

MCT460-WP Stand Alone Configuration

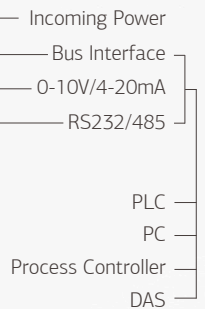
- Connects directly to PLC
- No Operator Interface required
- Powered at the MCT460-WP Transmitter
- All Analog Outputs, Digital and Bus interfaces directly from the Transmitter
- 5.7" Operator Interface/Display (optional)



Operator Interface
Color Touch Screen
(Optional)



Stand Alone Transmitter



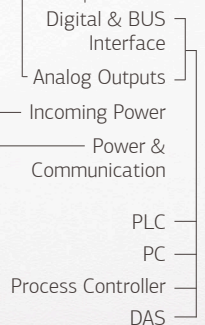
MCT460-WP System Configuration

- Transmitter connects to Operator Interface
- Transmitter powered from Operator Interface
- All Analog Outputs, Digital and Bus interfaces from Operator Interface
- Large 5.7" high resolution Touchscreen

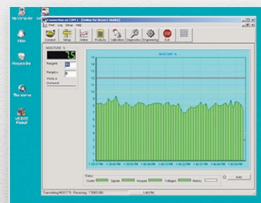
Operator Interface
Color Touch Screen



System Transmitter



Computer Software



Process Sensors Corporation (PSC) Viewer Software is a proprietary Windows-based package. It monitors all MCT460-WP functions and allows an operator to insert set-up parameters, perform or adjust calibrations, select product codes, examine internal diagnostic values and view trends of moisture and temperature.

Nova Series

A Robust, Flexible & Accurate Transmitter

How does the MCT460-WP Measure Moisture?

Water molecules contain O-H bonds which absorb light energy in a specific region of the NIR spectrum. The more water that is present, the greater the energy that is absorbed.

The MCT460-WP houses a quartz halogen lamp which channels energy through a rotating wheel containing NIR filters, one positioned at a wavelength where water absorbs and others positioned at reference wavelengths where there's no absorption by water.

Pulses of light illuminate the product and the diffused reflected light is collected by a concave mirror and focused onto a single temperature controlled detector. Detector signals are processed to give a read-out proportional to the concentration of water. Resin measurements are based upon the O-H and C-H bonds.

Simple & Reliable

The MCT460-WP remains a total hands-off gauge. Upon installation, simply adjust the zero and put the gauge to work! There is no routine maintenance or re-calibration. Calibration check standards are available for confirmation of long term gauge stability.

MCT460-WP Features

- New micro controller, high performance, dual core architecture. One core dedicated to NIR signal acquisition, the other programmed to manage computations and communications options
- Samples entire NIR signal train for increased measurement accuracy
- Proprietary Filter combination and algorithm for wood products
- Embedded bootloader allows sensor firmware to be upgraded through USB or serial interface
- Ergonomically sound IP67 cast aluminum enclosure
- Temperature controlled PbS detector for enhanced stability
- Built in cooling panel and Air Purge Assembly

Stable & Accurate

Designed and configured specifically for the wood products industry, the **MCT460-WP** is easy to install, and may be used at any stage of processing with all types of wood products applications.

Typical applications include:

- Oriented Strand Board
- Particle Board
- Fiberboard
- Wood Based Panelboard
- Sawdust
- Wood Pellets
- Hog Fuels

Moisture Measurements

Product	Range	Accuracy
Particle Board:		
Dryer Input	40-60%	0.3%
Dryer Output	0-10%	0.1%
Blender Input	5-15%	0.2%
Blender Output	1-10%	0.2-0.4%
OSB	0-5%	0.3%
MDF:		
Dryer Input	25-35%	0.5%
Dryer Output	0-5%	0.1%
Douglas Fir	0-70%	0.5-2%
Various Wood Chips	30-60%	0.5-1.5%
Cedar Sawdust	15-70%	0.3-1.0%
Sawdust	0-40%	0.3%
Hog Fuel	20-60%	0.5-0.7%

Ranges are quoted on a wet weight basis.

NOVA SERIES

MCT460-WP

Wood Products Moisture Transmitter

The Innovative New NOVA Series

The **MCT 460-WP** provides accurate, reliable and stable outputs for measurement and control. It can also be configured to continuously monitor wood products temperature. Delivered pre-calibrated and with a comprehensive 2-year warranty, the MCT460-WP is simple to install and may be used at any stage of wood products processing.

Specifications: MCT460-WP NIR Transmitter

Measured NIR Constituents: _____ 1, 2 or 3 simultaneously
Accuracy: (subject to application)
Moisture: _____ +/- 0.1%
Resins: _____ +/- 0.2%
Moisture Range:
Wet Basis: _____ Min. 0.1% Max. 60%
Dry Basis: _____ Min. 0.1% Max. 400%
Transmitter/Product Distance: _____ 8-18 inches (200-450mm)
Calibration Codes: _____ 100
Response Time: _____ 1-999 seconds. Three modes available:
Damping, Integration and Gated.
Power: _____ 90-260VAC, 50/60 Hz, 40 watts
Outputs: _____ 4-20mA, 0-10V (isolated), RS-232 & RS485
Weight: _____ 19 lbs. (8.6kg)
Construction: _____ Cast Aluminum, IP67
Window Purge: _____ Airpurge Diffuser, requires 5 psi

Specifications: Operator Interface

Display: _____ 5.7 inch Color Touchscreen LCD
Languages: _____ User Selectable
Power: _____ From MCT460 Sensor or Local
Cable: _____ 10 ft (3 meters) standard
Enclosure: _____ Cast Aluminum

Maintenance:

Warranty: _____ 24 months Parts/Labor
Routine Cleaning: _____ None Required
Calibration Verification: _____ Calibration Check Standard
Cooling: _____ Vortex Air Cooler (optional)

CE Compliance:

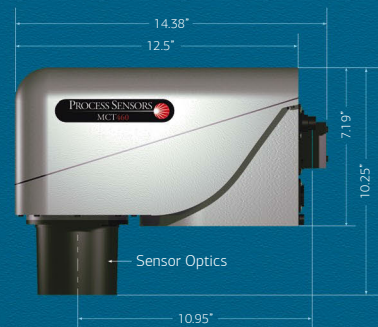
EMC Directives EN50081-1 & EN50082-2, EN61010-1
Low Voltage Directive

Databus & Software Interfaces:

Optional Bus Interfaces: _____ ProfiNet, ProfiBus, Ethernet IP
Modbus TCP, DeviceNet
Software: _____ Window-based Stand-alone Program
or OPC-DDE Server

Dimensions: MCT460

Front View



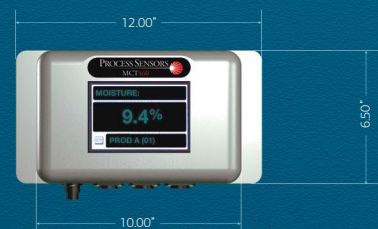
Bottom View



All Power and Interface
Connections on Rear Panel

Operator Interface

Front View



Bottom View



All Power and Interface Connections on Bottom



Applied
Instruments

For more information please contact...

Telephone: +64 (09) 579 2633
Fax: +64 (09) 579 2630

www.applied-inst.co.nz
Instrumentation for Process Measurement and Control